



THE CITY OF  
**DAVENPORT**  
IOWA | USA

# Davenport Flood Study

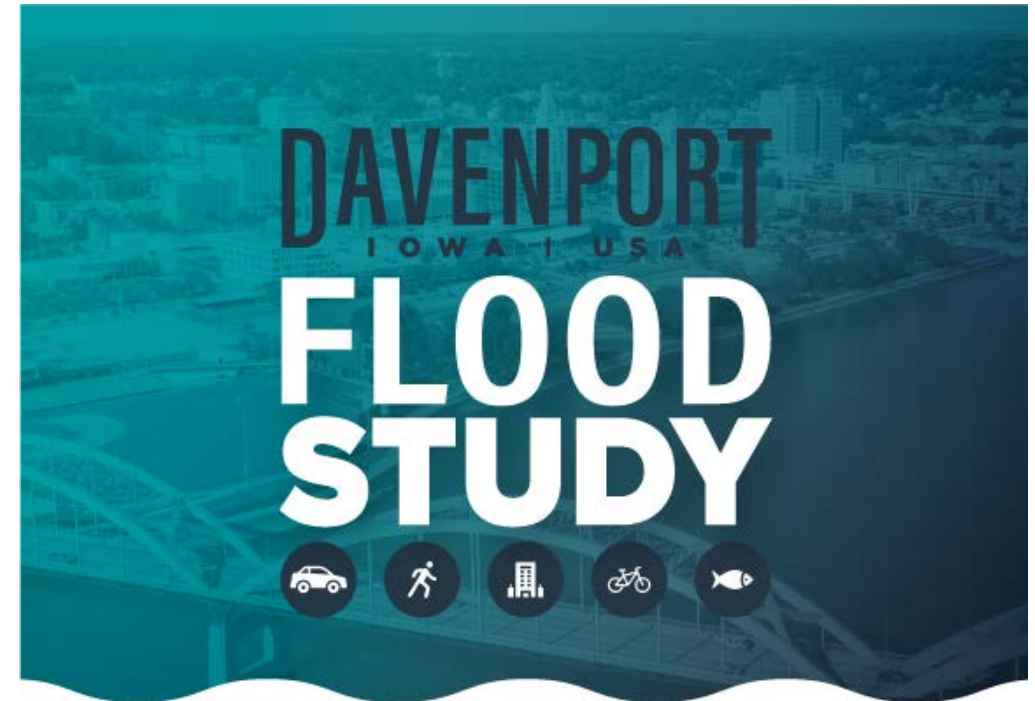
- [www.davenportiowa.com/floodstudy](http://www.davenportiowa.com/floodstudy)
- Robbin Dunn, Communications & Preparedness

12/03/20 | QCFRA Virtual Meeting

# Flood Study Timeline

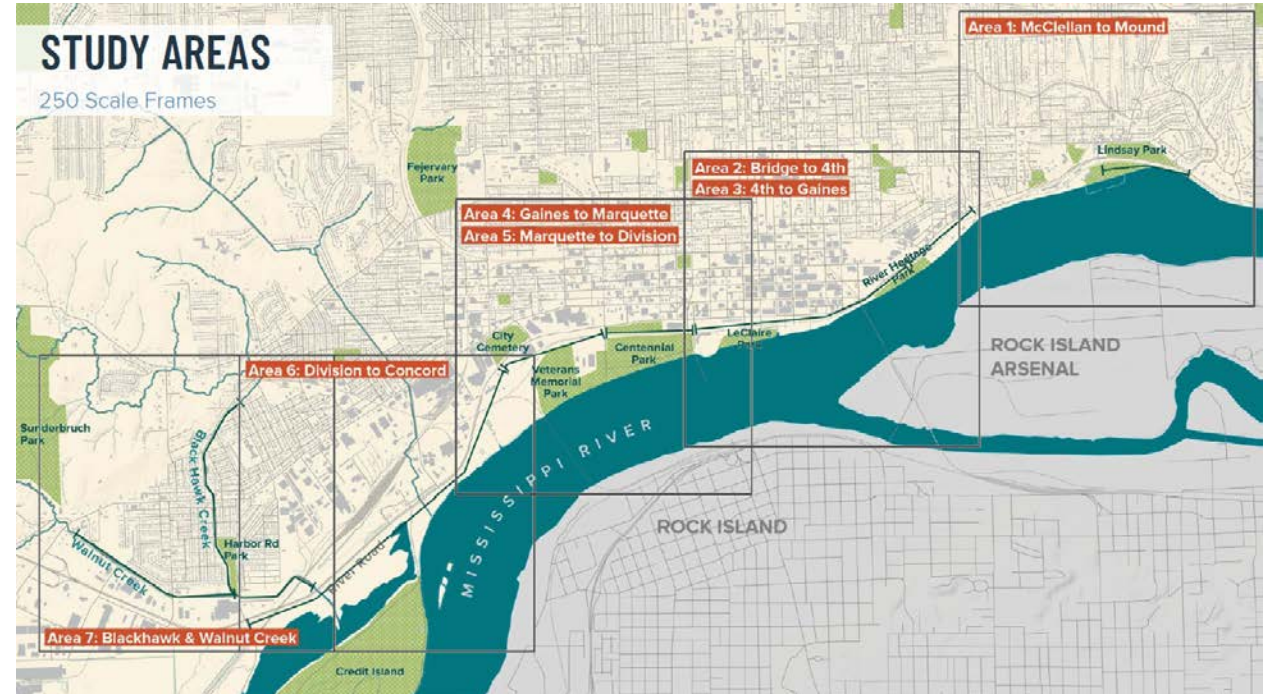
- Study Began | Jul 2020
- Data Collection | Aug 2020 to Dec 2020
- Stakeholder Meetings Wave #1 | Nov to Dec 2020
- Public Survey Wave #1 | Nov 9 to Nov 23 | Extended
- Data Analysis | Sep 2020 to Feb 2021
- Engagement Wave #2 | Feb 2021
- Engagement Wave #3 | May 2021
- Review Recommendations | Jul 2021 to Aug 2021
- Present Flood Study to Council | Oct 2021
- Approval & Recommendation Prioritization | Nov 2021

HR Green | Sasaki | Shive-Hattery



# Seven Unique Districts

- McClellan to Mound
- Bridge to 4th
- 4th to Gaines
- Gaines to Marquette
- Marquette to Division
- Division to Concord
- Blackhawk and Walnut Creek

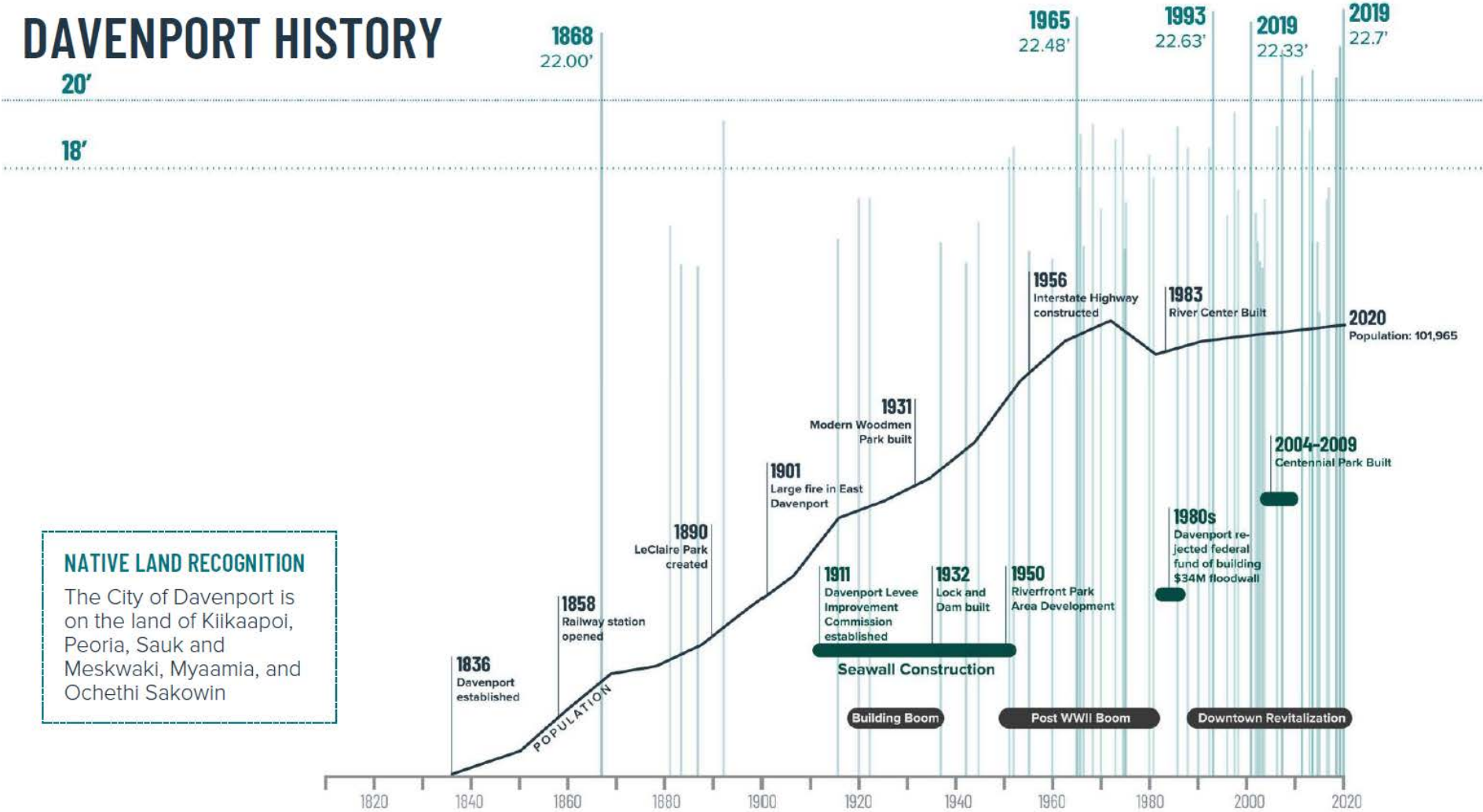


# Scope & Considerations

- Existing plans and studies
- Public and stakeholder input
- Maintain land use viability in the areas within and adjacent to the floodplain.
- Maintain transportation on River Dr between Davenport's eastern city limits to 3rd and 4th streets
- Maintain traffic on 2nd Street between Iowa and Division.
- Structural and non-structural flood defense systems and techniques
- Future climate impacts
- Interior drainage
- Reduce number of flood tasks and prolong need for implementing measures
- Feasibility
- Downstream impacts

# Holistic Approach

## DAVENPORT HISTORY



**NATIVE LAND RECOGNITION**  
The City of Davenport is on the land of Kiikaapoi, Peoria, Sauk and Meskwaki, Myaamia, and Ochethi Sakowin

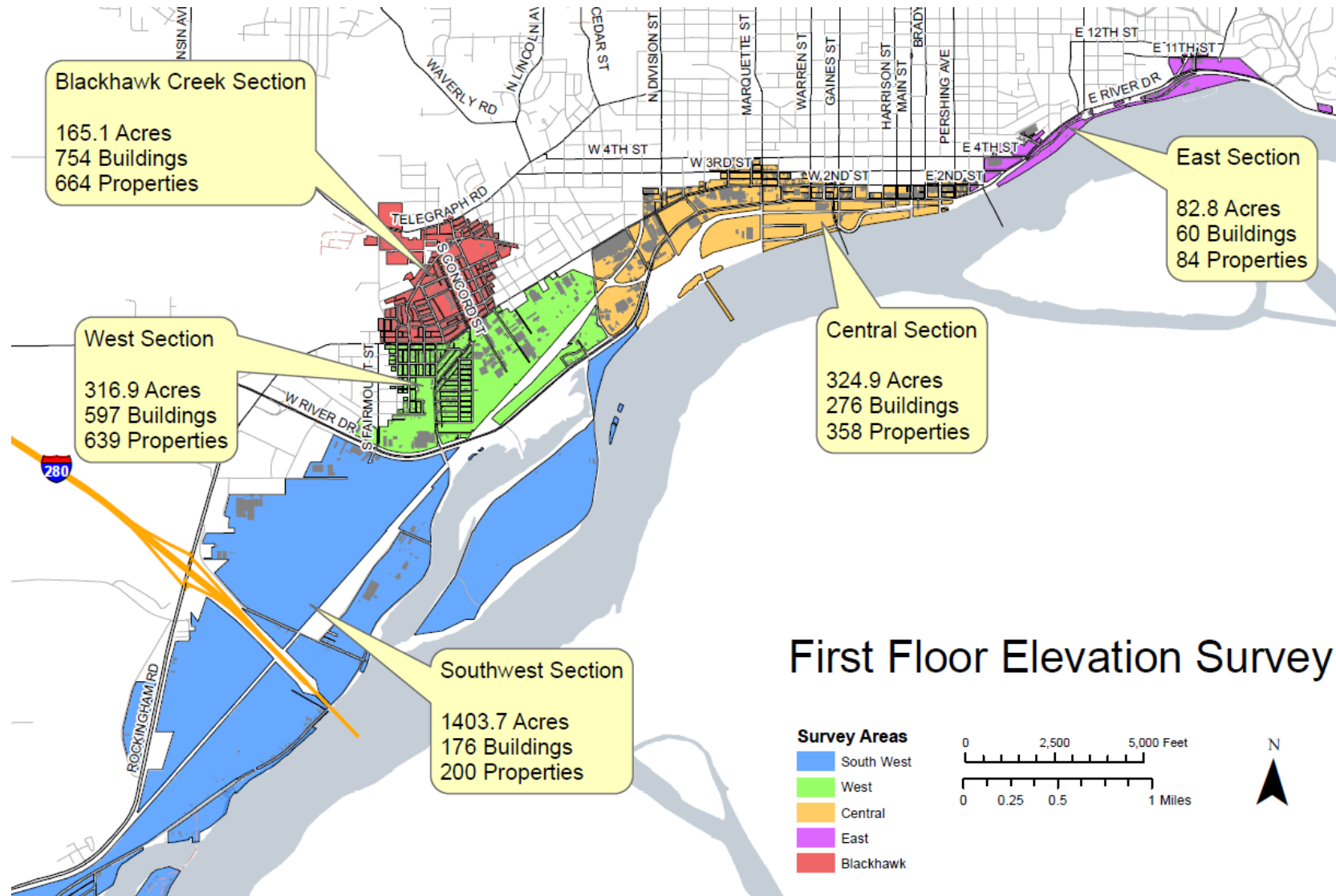
- History
- Social Context
- Open Space Network
- Transportation and Active Transportation Network
- Ecological Context

# Hazus Modeling

- Concurrent and complimentary to Flood Study
- Corps of Engineers | Silver Jackets
- Low Entry Point Elevation
- HEC-RAS Hydraulic Modeling
- Hazus Level 2 Analysis
- Potential Economic Damage and Mitigation Recommendations

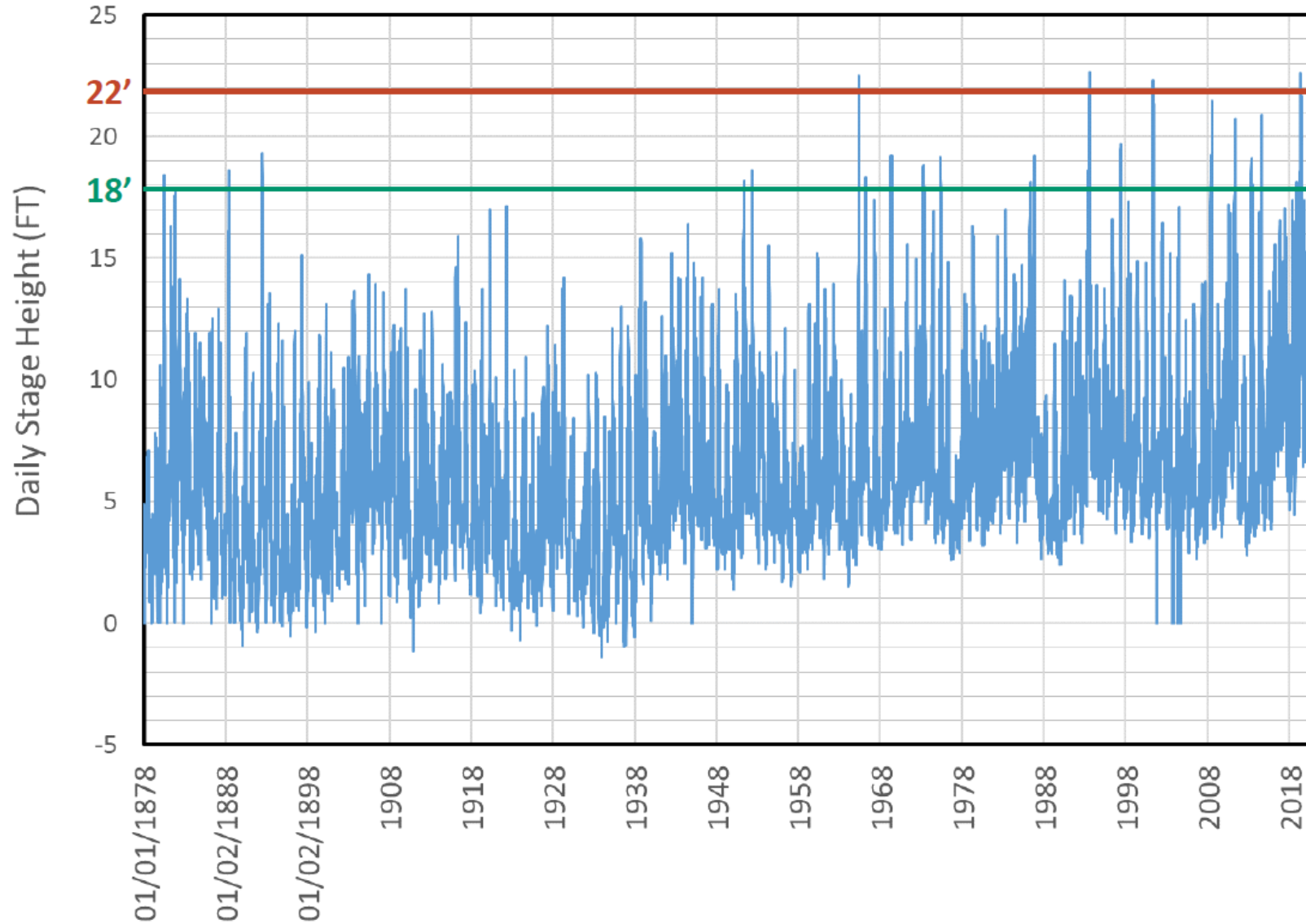


# Low Entry Point Elevation

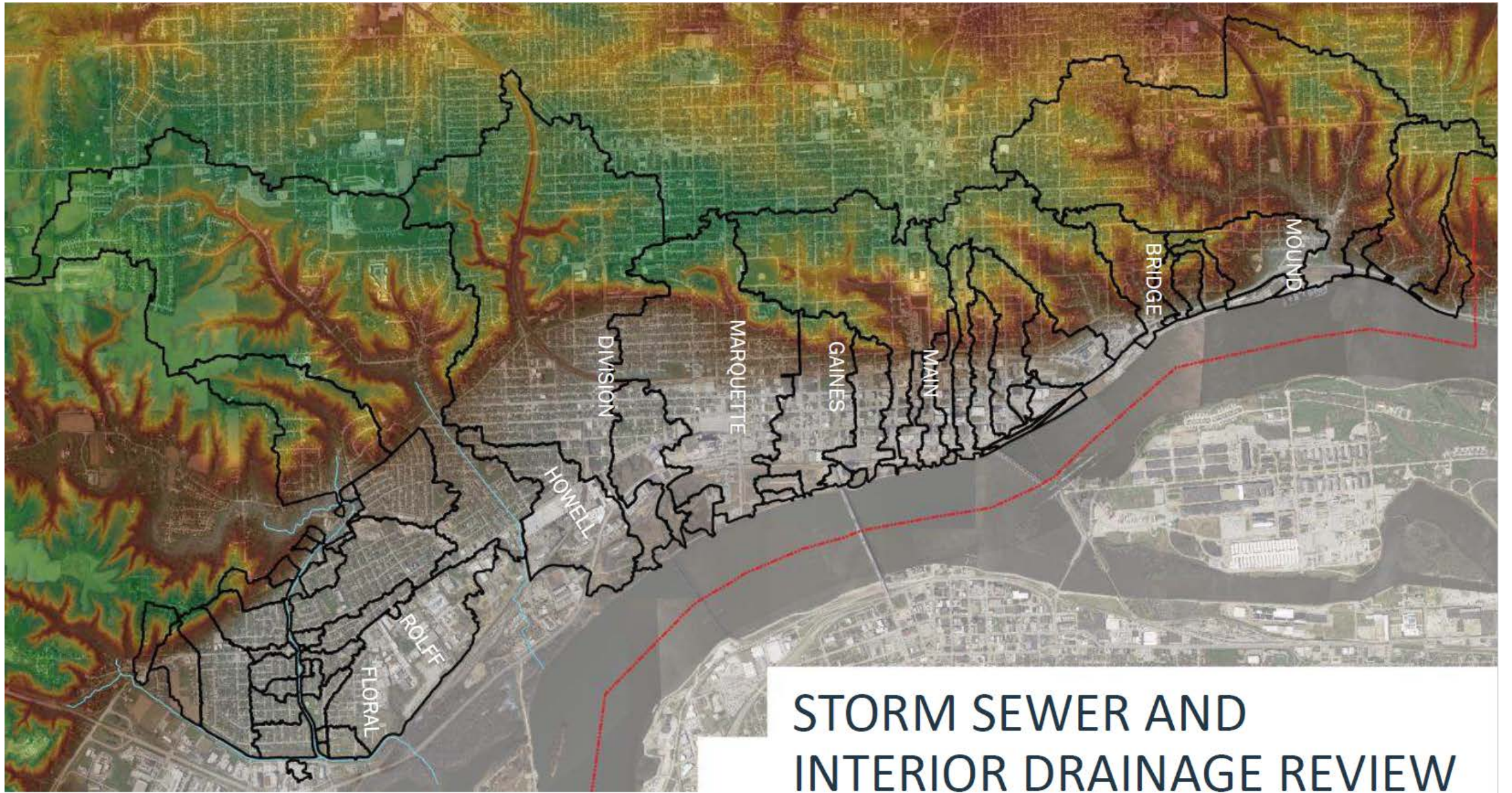


First Floor Elevation Survey

Daily Stage for Mississippi River at Rock Island (Lock and Dam 15)  
from 1878 to 2020  
Gage Zero Elevation = 542.50 FT







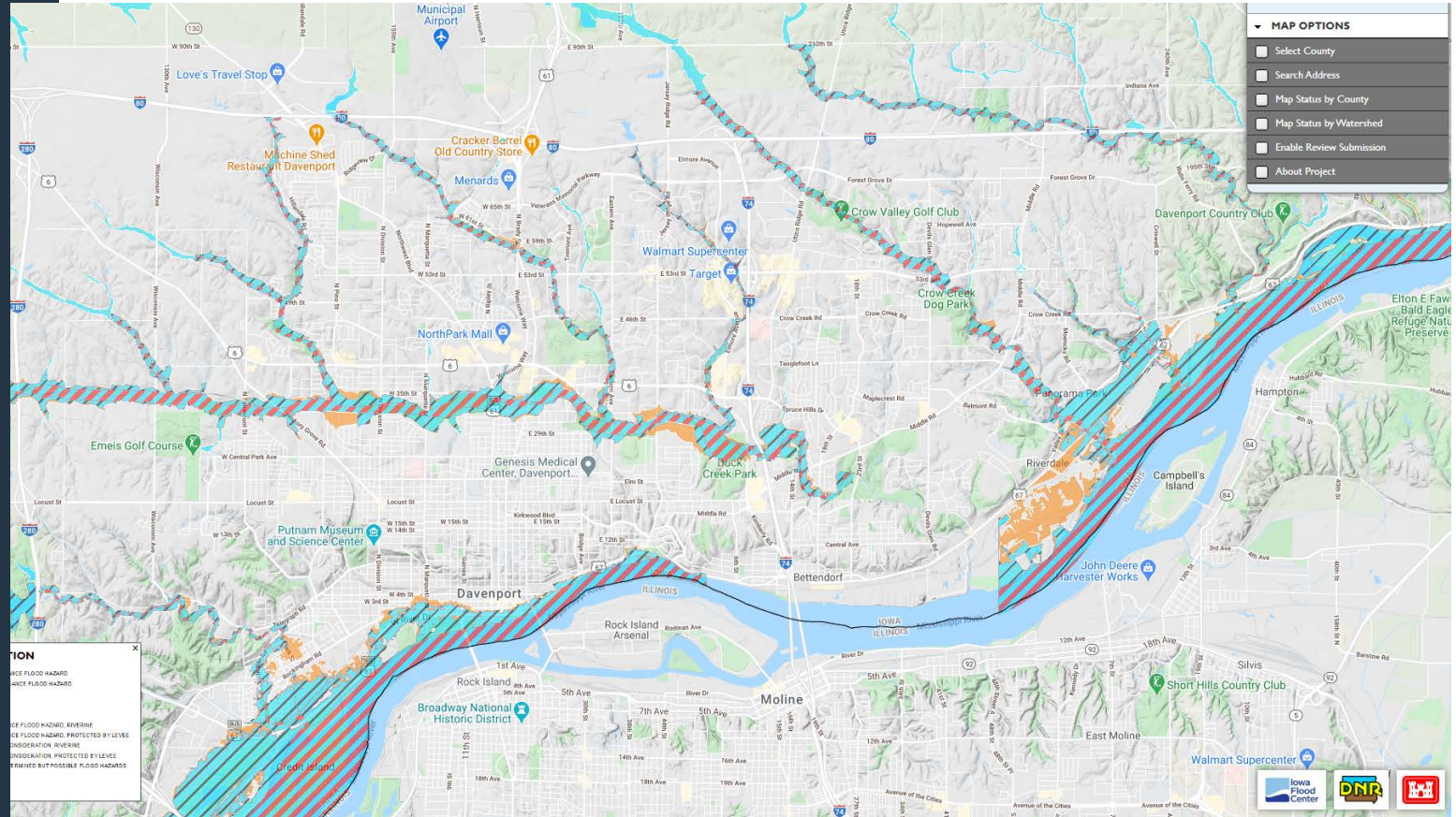
## STORM SEWER AND INTERIOR DRAINAGE REVIEW

# What's Next?

Wave 2 Stakeholder & Public  
Input on Preliminary  
Recommendations | Feb/Mar  
2021

Public meetings for property  
owners located in the  
floodplain

- Flood zone updates
- Sharing elevation data
- Risk awareness
- Questions and answers

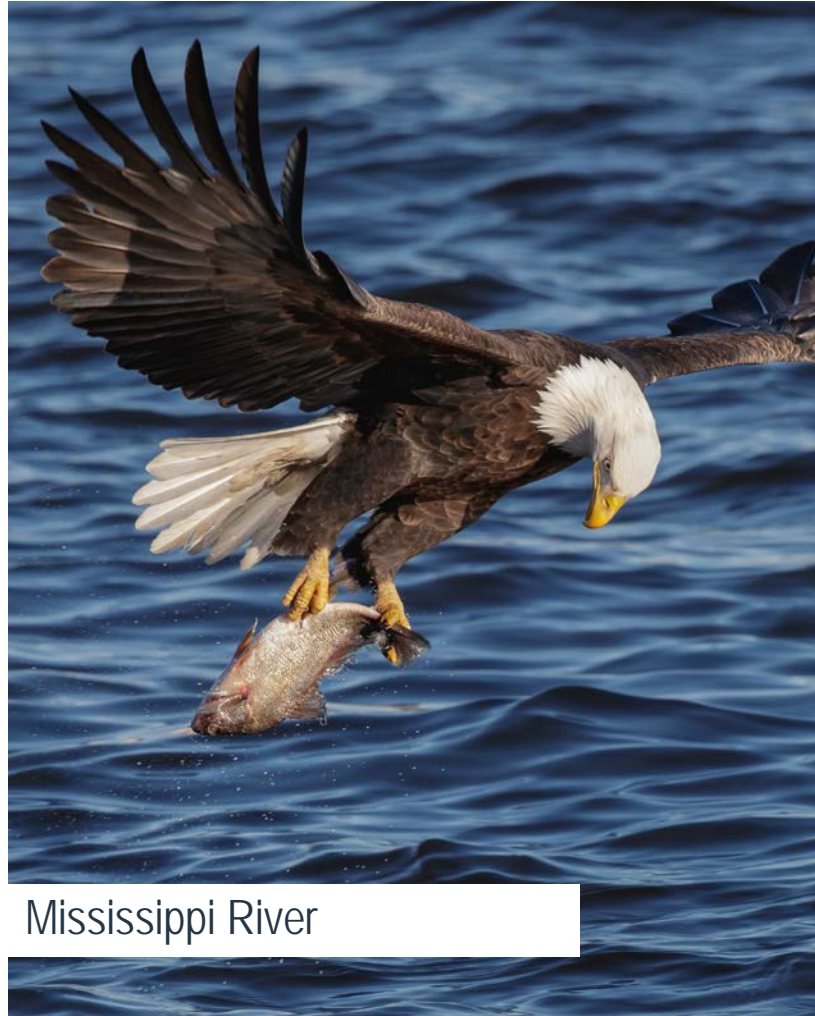


# Thank You

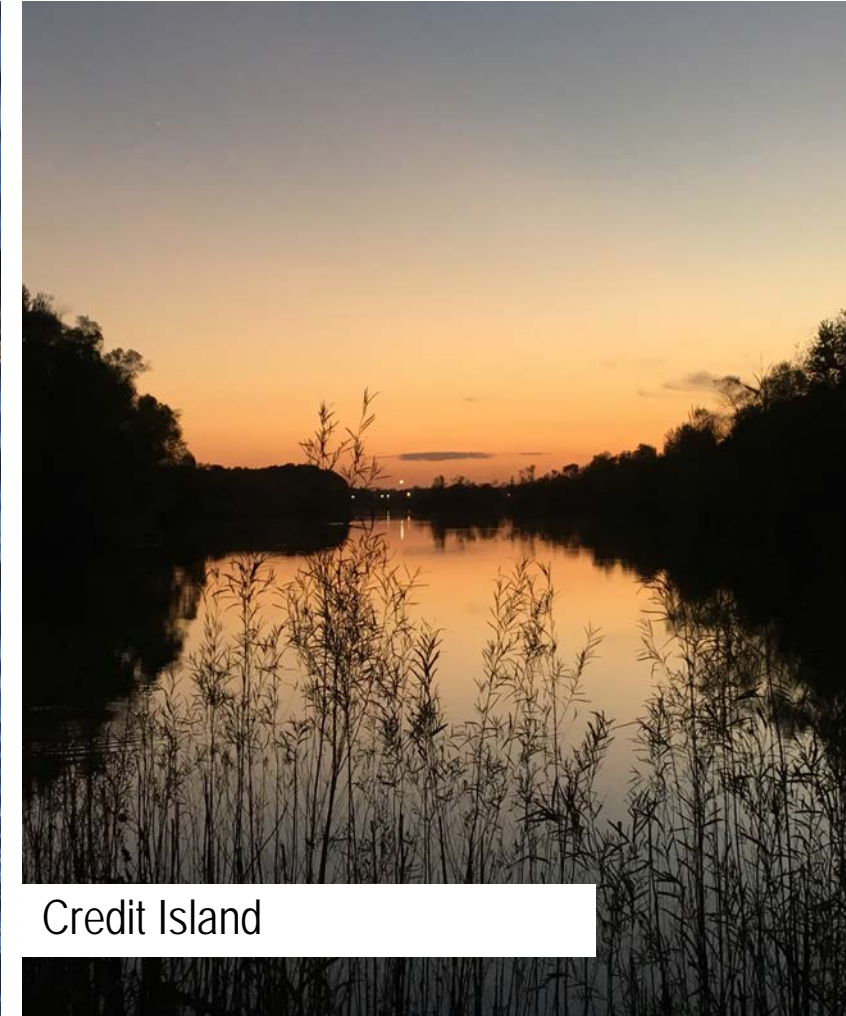
[www.davenportiowa.com/floodstudy](http://www.davenportiowa.com/floodstudy)

New document to be released soon on Davenport's historical relationship with the riverfront

DAVENPORT  
IOWA | USA



Mississippi River



Credit Island

---

# Questions?

---





THE CITY OF  
**DAVENPORT**  
IOWA | USA

# Scott County Flood Mapping

- Laura Berkley, Development & Planning Administrator

12/03/20 | QCFRA Virtual Meeting

# Mapping Resources

- <https://ifis.iowafloodcenter.org/ifis/maps/hazard/>
- <https://ifis.iowafloodcenter.org/ifis/newmaps/risk/map/>
- Select creek hydraulic and hydrological study and updates
  - Preliminary Review Phase | Spring 2021
  - Finalize Effective Maps | TBD

